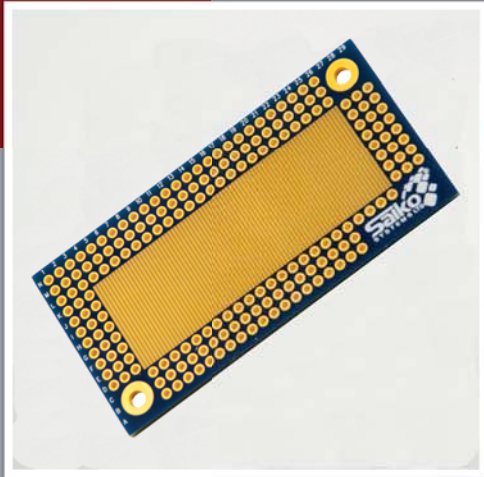


Surface Mount Prototyping board

PT-SMTH-APG



The Surface Mount (SMT) Prototyping boards are a robust solution designed to allow quick and easy circuit prototyping of surface mount components. The boards offer 0.08" round pads with 0.047" plated holes spaced 0.1" apart for easy wiring to other bread boards. The SMT area consists of pads measuring 4 mils x 25 mils with 4 mils spacing between pads which allows for ultra fine pitch parts to be soldered. The back side of the boards feature isolated planes which can be used for ground or power.

Hole Diameter:
0.047" (1.2mm)
plated holes

Hole Spacing:
0.1" (2.54mm)

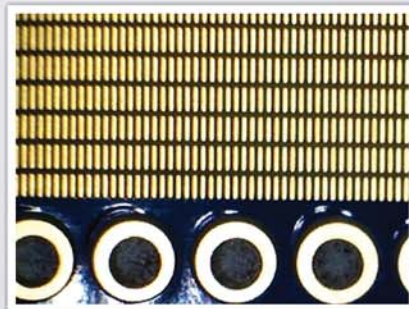
Pad:
0.08" (2.032mm)
round pad

SMT Pads:
4 mils x 25 mils
4 mils spacing

Finish:
Electroless Nickel
Immersion Gold
(ENIG)

PCB Thickness:
0.062" (1.57mm)

Mounting Holes:
4-40 size, plated



SMT area allows for prototyping of ultra fine pitch components



Isolated planes on back can be used for ground or power

Note: Each model has a slightly varying configuration pattern. (PT-SMTH-APG-3.0x1.5 pictured)

Ordering Information

Part Number	Board Size	Tie Points	No. of Planes
PT-SMTH-APG-3.0x1.5	... 3.0" x 1.5"	187	4
PT-SMTH-APG-4.0x2.0	... 4.0" x 2.0"	277	4
PT-SMTH-APG-5.0x2.5	... 5.0" x 2.5"	349	4
PT-SMTH-APG-6.0x3.0	... 6.0" x 3.0"	508	4
PT-SMTH-APG-7.0x3.5	... 7.0" x 3.5"	715	8
PT-SMTH-APG-8.0x4.0	... 8.0" x 4.0"	910	8
PT-SMTH-APG-9.0x4.5	... 9.0" x 4.5"	1268	12