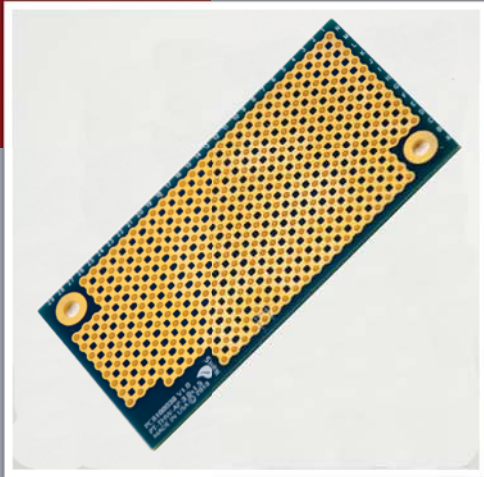


Cut-Trace Series Prototyping board

PT-THW-AP



The Cut-Trace style prototyping boards are a robust solution designed to allow quick and easy circuit prototyping. The boards offer 0.08" round pads with 0.047" plated holes spaced 0.1" apart. All Pads are connected together which allows a clean finished result by eliminating wires and solder paths. After soldering your components, simply cut traces using a sharp blade (X-acto Knife) to form your desired circuit.

Hole Diameter:
0.047" (1.2mm)
plated holes

Hole Spacing:
0.1" (2.54mm)

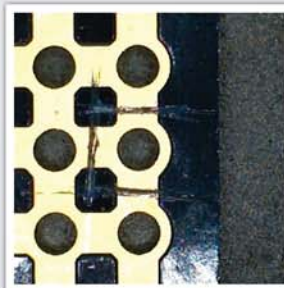
Pad:
0.08" (2.032mm)
round pad

Finish:
Electroless Nickel
Immersion Gold
(ENIG)

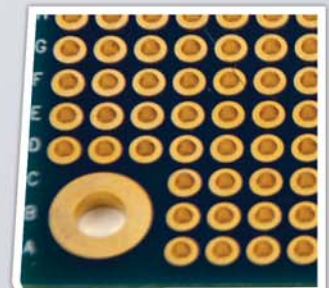
PCB Thickness:
0.062" (1.57mm)

Mounting Holes:
4-40 size, plated

Cut traces to isolate pads
and create circuits



Plated through holes
on opposite side



Ordering Information

Part Number	Board Size	Tie Points	Mounting Holes
PT-THW-AP-2.0x1.0	... 2.0" x 1.0"	143	2
PT-THW-AP-3.0x1.5	... 3.0" x 1.5"	371	2
PT-THW-AP-4.0x2.0	... 4.0" x 2.0"	706	2
PT-THW-AP-5.0x2.5	... 5.0" x 2.5"	1123	4
PT-THW-AP-6.0x3.0	... 6.0" x 3.0"	1658	4
PT-THW-AP-7.0x3.5	... 7.0" x 3.5"	2275	6
PT-THW-AP-8.0x4.0	... 8.0" x 4.0"	3010	6
PT-THW-AP-9.0x4.5	... 9.0" x 4.5"	3815	8